



Mid-Week Edition



WHO KNEW YOSEMITE COULD BE SO GLAMOROUS!

A World-Class Spa Just 1 Mile from the National Park Entrance

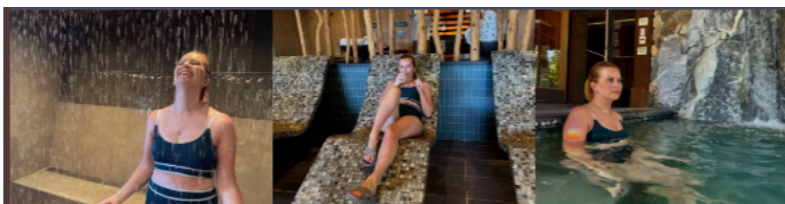
Last weekend, I took a much needed girl's trip to an incredible lodge and luxury spa located right at the doorstep of Yosemite National Park. Rush Creek Lodge & Spa is just one mile from the west entrance and the perfect spot for a little rest, relaxation, and pampering after a long day of hiking and fighting the crowd in the park.

The spa transports you to another realm, designed in the essence of Yosemite's grandeur – rushing waterfalls, warm granite rock, smooth river rocks softened with time, scents of eucalyptus and lemon grass, and mineral hot springs.



In addition to massages, facials, and a whole range of other incredible spa experiences, you can get a day pass and experience all of the following: .

- Sensory Meditation Room with sounds and lighting to put you in a full state of relaxation.
- Aromatherapy steam room
- Warm waterfall cove where you can sit and let the warm waters fall over your back.
- Himalayan salt sauna
- Cool mist room with alternating cold and warm showers
- Granite mineral hot tub and waterfall
- Heated zero gravity stone chaise lounges
- Open air outdoor lounge
- Complimentary tea bar



You can even order a bottle of champagne and a charcuterie board, or anything else you desire from their full bar and restaurant menus.

[WATCH MY IG REEL ON THE SPA](#)



Ready to book your stay? Send me a message and I'll share my discount code with you for big savings!

[RUSH CREEK LODGE & SPA](#)



VISITING YOSEMITE PARK

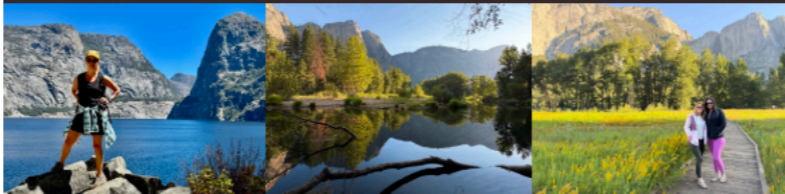
Quick Guide to This Majestic Park in California's Sierra Nevada

Known for its granite cliffs and waterfalls, Yosemite provides some of the most dramatic scenery in the world. Covering over 1,200 square miles, the park offers endless hiking and things to do.

Entrance Fees: Private Vehicle \$25, Motorcycle \$30, Pedestrian/Bicycle \$20

Things to See:

- **Half Dome** - This awe-inspiring granite dome is probably the most photographed spot in the park. See the iconic landmark from Mirror Lake or Washburn Point.
- **El Capitan** - An impressive granite monolith towering over 3,500 feet above the valley floor.
- **Wawona Tunnel View** - Perhaps the most spectacular viewpoint in the entire park with picture-perfect views of the big 3 - El Capitan, Half Dome, and Bridalveil Falls
- **Yosemite Falls** - The highest waterfall in North America at over 2,400 feet with a historic trail leading to the upper, lower and middle falls. Peak time to see it is Spring.
- **Mariposa Grove** - an old growth forest of giant sequoias.



Tips For Visiting:

- Use the free shuttle to avoid driving and struggling to find parking. It typically runs year-round and provides access to many of the must-see spots you'll want to visit. It is now required when visiting the Mariposa Grove.
- If you're planning to visit more than one national park, consider purchasing the America the Beautiful Annual National Park Pass to save money.
- Get to the park early and see the most popular sites first before they get too crowded.
- Park entry reservations are now required during most of the year (end of May through early September).
- If staying at Rush Creek Lodge & Spa, look into the public transportation into the park which stops right out front of the resort.
- Pack in layers as weather changes quickly.

NEXT VACAY GIVEAWAY STARTS SATURDAY

Jacksonville, Florida

Win a 2 night stay at the ocean front Margaritaville, dinner for 2, beach chair and bike rentals for the duration of your stay, and a 2-hour guided kayaking tour with PADL!

